

What is Sustainability?

Attending to **current needs** without compromising the **capacity of future generations** to **satisfy their own needs**, ensuring a **balance** between **economic growth**, **social well-being** and care for the **environment**

Why a Sustainability Report?

As a transparent **response** to our **stakeholders' concerns** regarding the company's **economic, social and environmental** performance



What were the key events in 2014?

Approval of the ESTEVE Code of Ethics

Antoni Esteve elected Chairman of Farmaindustria

Extension of the facilities at Shaoxing, Banyeres del Penedès and Jiutepec

Global alliance between Mundipharma-Purdue and ESTEVE to innovate in pain relief

New optimised Omeprazol: innovation in generics

Launch of the Family Plan for employees' disabled children

Production of the 2015-2017 Three-Year Plan

Discontinuation of production at Naucalpan (Mexico)

Start of the sale of the Veterinary division (closed in April 2015)

Start of the natural history study for Sanfilippo

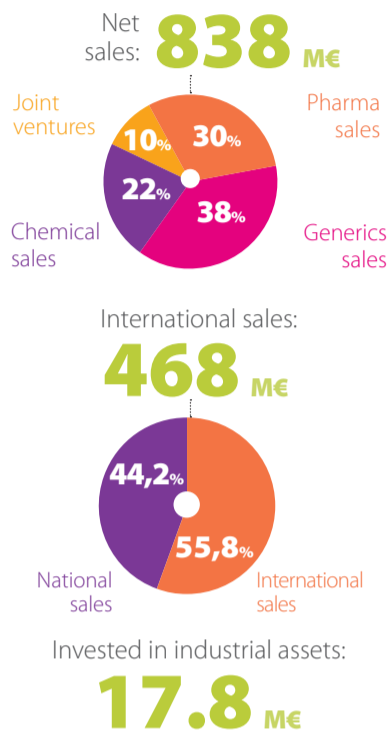
Duloxetine, ESTEVE's first vertically integrated drug, arrives in the USA

Installation of a photovoltaic solar energy plant at Martorelles

What were the key data in 2014?

You can find more detailed information in our 2014 Sustainability Report at www.esteve.com/sustainabilitysurvey

Economic



Patients



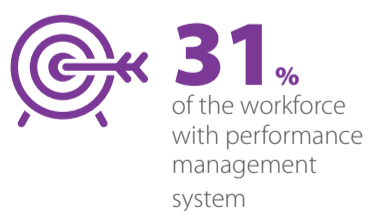
Clients



Strategic Partners, Suppliers and Institutions

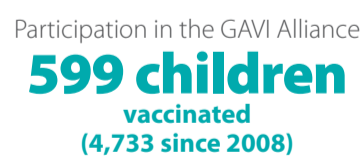


Internal Collaborators



Continuation of the health & safety campaigns: **“Work smart. Work safe”** and **“Work healthy”**

Society



Environment

