



Press Kit 2023



Our value creation strategy

ESTEVE is a company committed to the **purpose of improving people's lives**. Our purpose is the distinctive hallmark that gives meaning to our strategy and daily actions.

The strategy focuses on providing patients worldwide with the safest, most innovative, and effective medications to enhance their lives and assist healthcare professionals, caregivers, and society as a whole



Our values

People matter

We recognize and reward innovative approaches and behaviors, and we respect the contributions of all employees. We are strongly committed to addressing patients' needs- our reason for being.

Transparency

We believe that transparency leads to trust and both are key pillars for honest and productive collaboration. We accept that sometimes we win and sometimes we learn.

Accountability

We are committed to accountability and integrity. We always take responsibility for our decisions and our work, doing the right things in the right way.

Esteve Healthcare at a glance

Business

€644M

Net revenue
(+15% vs 2021)

68%

**net sales of proprietary
products in Pharma**
(+10% vs 2021)

116

**brands in our
pharmaceutical
portfolio**

100

**proprietary
products**



Environment

100%

**renewable energy
use in our Industrial
sites in Spain
and R&D center**

58%

**of the total amount of waste
has been recovered for reuse**

70%

**of the waste solvent sent to
valorization treatment, directly
contributing to Circular Economy,
as the solvents will be used as
raw materials for different sectors
and uses**



People

Impact of our products:

7 million

people worldwide

+ 55,000

Number of healthcare professionals we have been working with for the well-being of patients

Donations and investments aimed at making a positive impact on society

€874,361

A total of **31 entities** have received our support to help vulnerable communities and/or patients

Employees:

1,824

employees (+16% vs 2021)

Gender:

37%

women

63%

men

43%

of managerial positions are held by women*

*Does not include Executive Management

27

nationalities

Training:

20

average training hours per employee

92%

of employees have received training



Esteve Healthcare Milestones 2022

January - March

- We acquired a new industrial site in **Lliçà de Vall** that increased our manufacturing capacity by +20% in our CMO business.
- Our **Portuguese affiliate** began operations, focused on proprietary products in OTC and Ophthalmology.
- Launch in the **U.S.** of a co-crystal of celecoxib (anti-inflammatory) and tramadol (analgesic) for the treatment of acute pain in adults.
- We entered into a strategic partnership with **Medtronic** to address the needs of cancer pain patients.

April - June

- We began producing, for a multinational company, the active pharmaceutical ingredient for an oral treatment that prevents patients with COVID-19 from progressing to more severe stages.
- Launch in **Spain** of a natural product to promote restful sleep, to strengthen the OTC's own brand, and a treatment for mild to moderately severe Alzheimer's disease
- Creation of a new franchise in the central nervous system (CNS) therapeutic area in **Germany**, and a launch of an inhaled levodopa medication for the treatment of episodic motor fluctuations (OFF phase) in Parkinson's patients.



Julio-septiembre

- We began developing our capabilities in High Potent Active Pharmaceutical Ingredients (**HPAPI**).

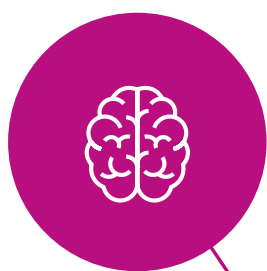
Octubre-diciembre

- Launch in **Spain** of a medication used in chemotherapy. It is administered prior to a stem cell or bone marrow transplant, and strengthens our specialized area in oncology.
- Launch in **Portugal** of an ophthalmological product to strengthen ESTEVE's position in the market.
- Submission of the **regulatory dossier** for a new product to the Spanish authorities: we expect approval in the fourth quarter of 2023.
- Our **Italian affiliate** began its operations, focused on our proprietary onco-pain product portfolio.

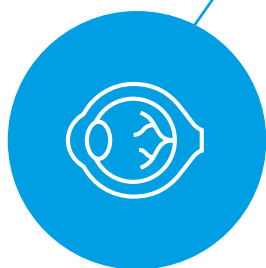
ESTEVE

Our therapeutic areas

Central nervous system



Oncology



Ophthalmology

Other therapeutic areas



OTC



Anti-infectives and others



Cardio Metabolism

ESTEVE is a responsible and socially committed company.

In 2002, ESTEVE, as a company, we were one of the first Spanish companies to join the **United Nations Global Compact**.

Our Sustainability Strategy aims to contribute to the 2030 Agenda through the United Nations Sustainable Development Goals. This strategy is based on **three main pillars**.



#makeitsustainable

Environment Care

We conduct our activities with utmost respect for the environment and strive to minimize our impact on the environment. We have a clear stance in the fight against climate change, focusing on reducing emissions and raising awareness about the need for daily action.

We work to reduce our carbon footprint and optimize the use of renewable energy.

At ESTEVE, we also promote the circular economy through responsible resource usage and effective resource management. Since 2009, when we joined the United Nations' Caring for Climate program, we have committed to transparency in this field and in the results of our actions.

People Care

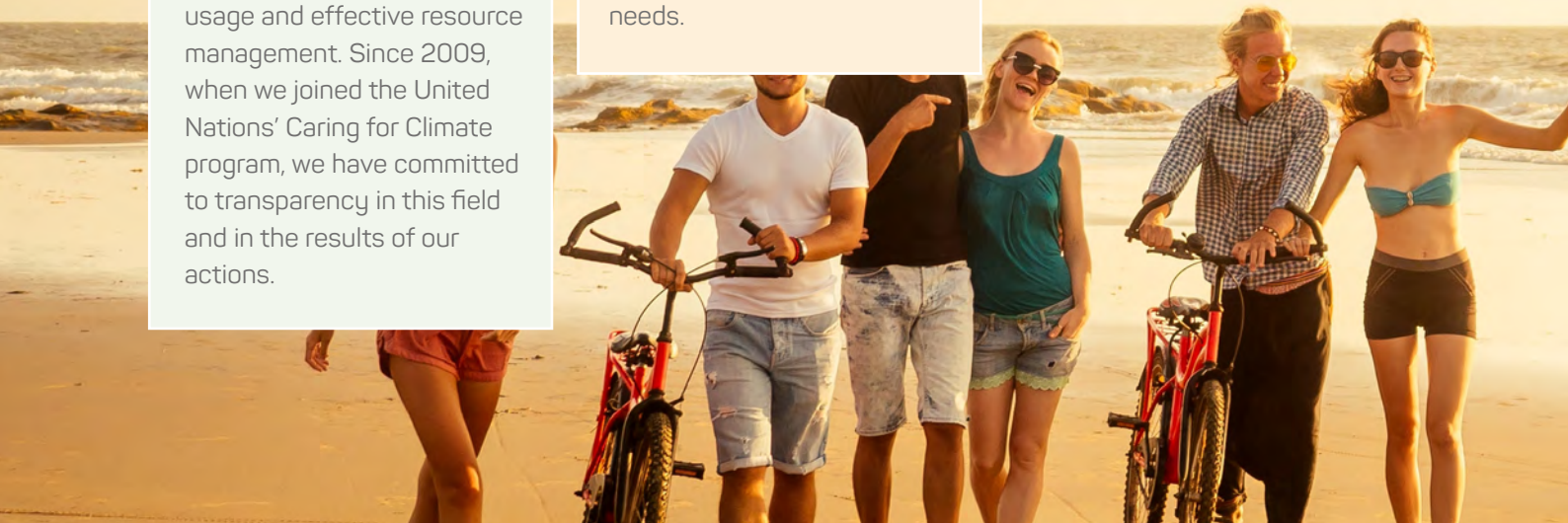
We guarantee the quality and safety of our products and contribute to improving the quality of life for patients.

We ensure a safe and healthy work environment for our employees, promoting healthy lifestyles, gender equality, and personal development.

We strive to generate a positive impact in the community through projects and collaboration agreements with third parties that guarantee access to healthcare and meet basic needs.

Business Care

Our processes and the way we work at ESTEVE not only comply with current legislation, but we also carry them out ethically and above the required standards. Furthermore, we are committed to best practices in corporate governance, comprehensive risk management, and transparency in all our interactions.



Our Industrial Plants, which have a total of +1000 m³ of reaction volume.



Reaction volume: 333 m³

Scale-up, intermediate and API manufacturing

Location: Celrà, Spain



Reaction volume: 58 m³

Scale-up, intermediate and API manufacturing

Location: Banyeres del Penedès, Spain



Reaction volume: 160 m³

Location: Lliçà de Vall, Spain



Reaction volume: 140 m³

Development, scale-up, intermediate and API manufacturing

Location: Jiutepec, Mexico



Reaction volume: 344 m³

Intermediate and API manufacturing
Joint venture with Huadong Medicine Group

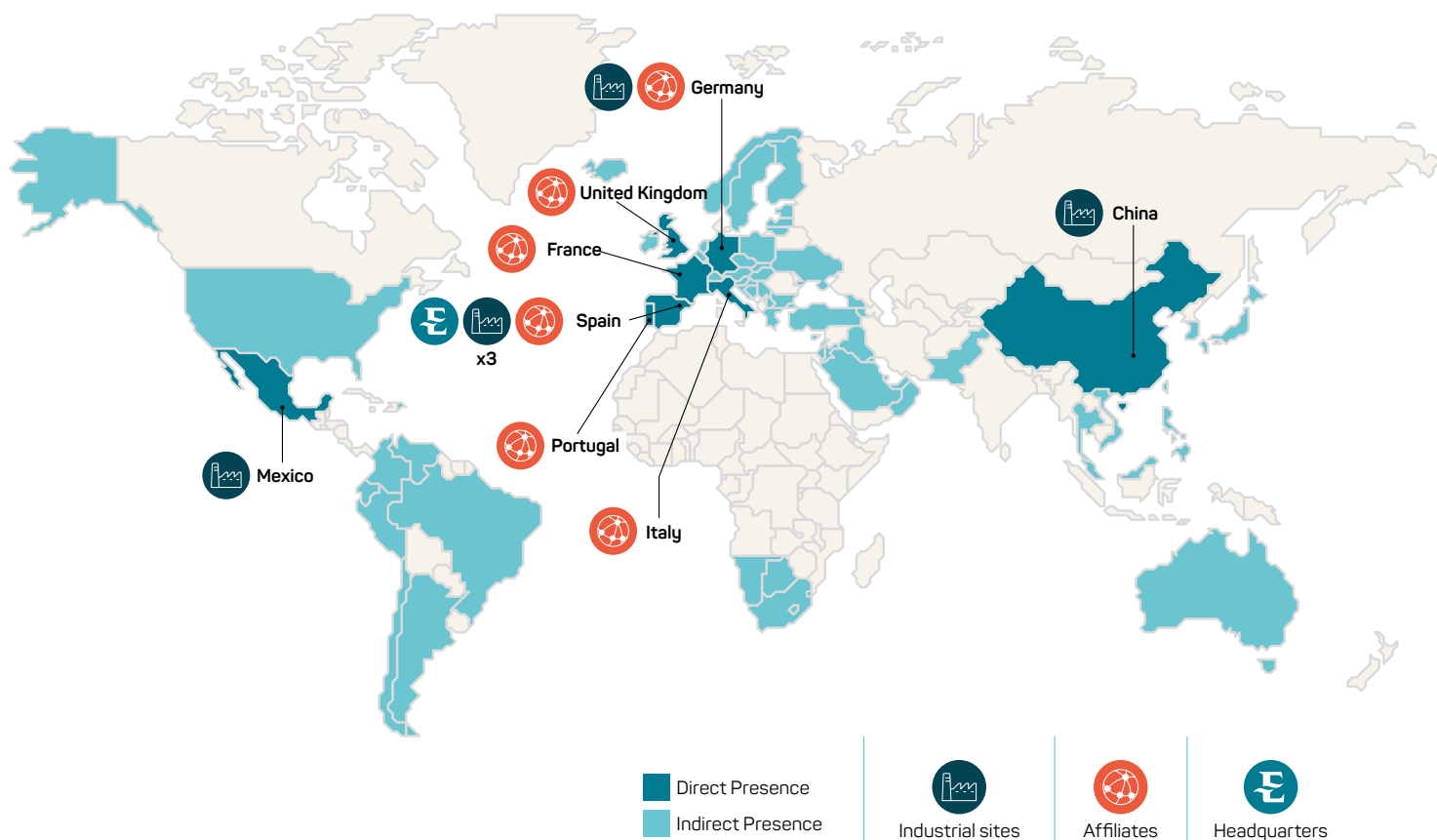
Location: Shaoxing, China



Pharmaceutical manufacturing plant

Location: Schiffweiler, Germany

Global presence



€644M

Net revenues

€176M

Spain

€290M

Rest of Europe

€178M

Rest of World



1,824

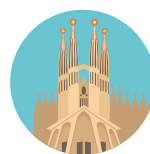
Employees

Spain	1,136
China	350
Mexico	173
Germany	125
France	15
Portugal	12
UK	11
USA	1
Italy	1



48

Countries



HQ

in Barcelona,
Spain



+7 Million
patients impacted
by our activities



100
proprietary
products



ESTEVE



@ESTEVE_ESP



ESTEVE_ESP



www.esteve.com

For further information, please contact:

Irene Simón
Head of Global External Communications & ESG
93 446 60 00
isimon@esteve.com