




Press Kit 2024

A large, dark silhouette of a tree with a wide, spreading canopy stands on a grassy hill. In the background, four people are standing, looking out over a landscape under a soft, hazy sky. The foreground is filled with tall, golden grass.

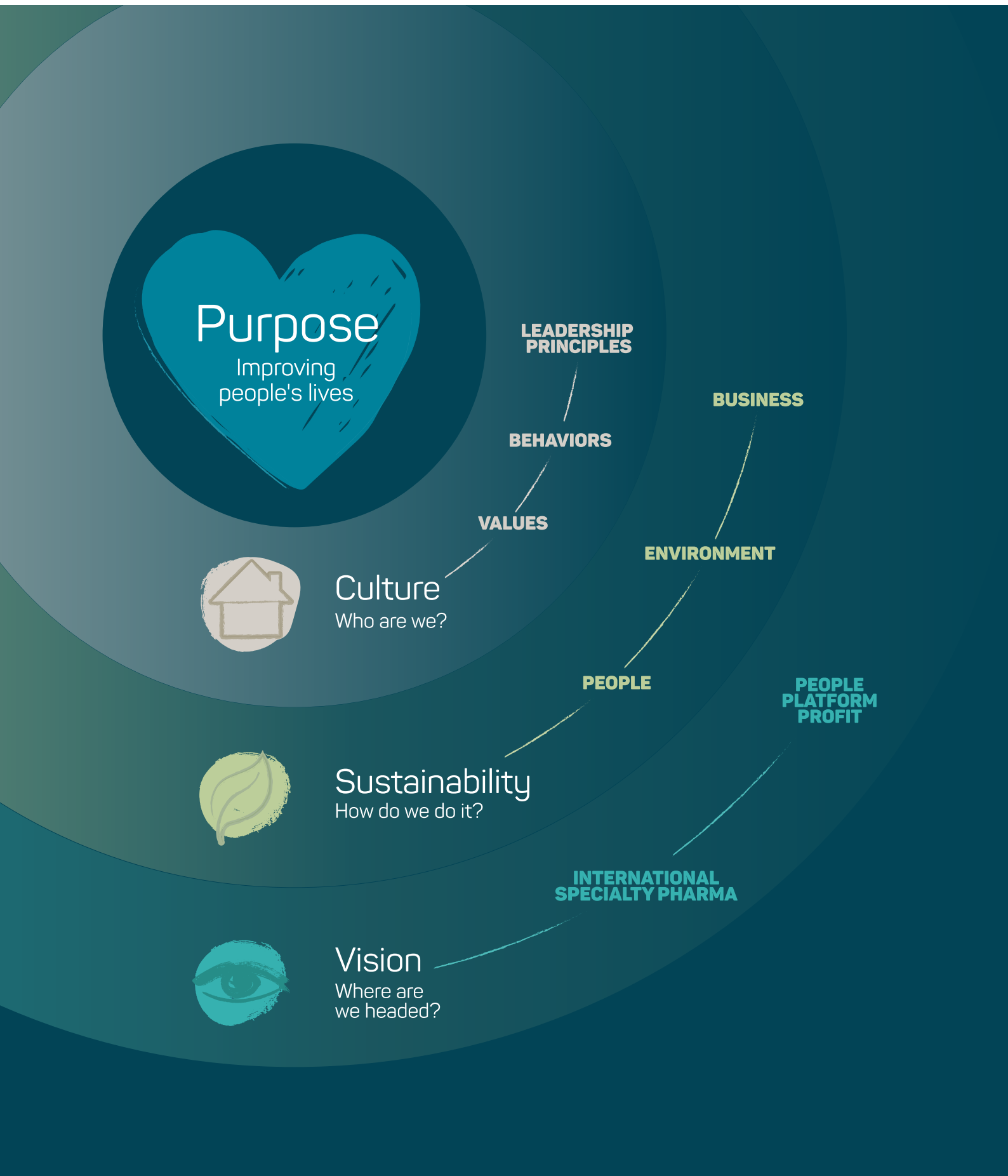
Our strategy for value creation

Our strategy for value creation encapsulates the essence of ESTEVE's existence and delineates the fundamental components that define our identity, our behavior and our vision for the future.



Why we exist (PURPOSE)

At ESTEVE, we have a very clear purpose: "to improve people's lives". This is our cornerstone, the element that binds our people together and gives meaning to our daily actions and strategic pursuits. In a globally diverse and ever-changing environment, offering the best treatments to our patients and supporting healthcare professionals and caregivers are the core of our mission.



Esteve Healthcare at a glance

Business



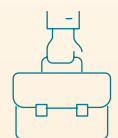
€710M

Net Revenue
(in millions of euros)
(+10% vs 2022)



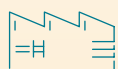
6

**European
pharma affiliates**



110

**brands in our
pharmaceutical portfolio**



1,000 m³

**Total production capacity
at our CMO business**

- 5 State-of-the art industrial sites (3 in Spain, 1 in China, 1 in Mexico)
- 1 Research & Development center (Spain)
- 1 Finished Dosage Form, manufacturing site (Germany)

Environment



100%

**renewable energy use
in all our sites and HQ**



5.3%

Carbon Footprint
(reduction vs 2022)



64%

**of waste solvent sent
to valorization treatment,
directly contributing to
circular economy as these
solvents will be used as
raw materials for different
sectors and uses**

People

Social impact



Impact of our products:

8 million
people worldwide



We have been in contact with

60,000

healthcare professionals to
work together for the health
and well-being of patients



+€800,000

donations and investments
aimed at making a positive
impact on society

Diversity, equality & inclusion



1,926
employees
(+6% vs 2022)



38%
women



62%
men

47.5%
of managerial positions
are held by women



28
nationalities



Training

22
average training
hours per employee
(+12.6% vs 2022)

93%
of employees have
received training
(+0.7% vs 2022)

Esteve Healthcare 2023 Milestones



1ST SEMESTER



Spin-off from the CQFE group into Grupo Esteve Lifesciences. Preparation of the corporate structure to welcome a new investor.



Launch in Spain of Inbrija®, the first inhaled treatment for off-episodes in Parkinson's disease.



Net Zero Project: a dedicated team established to tackle the challenge of achieving net-zero emissions by 2050.



New investor joins ESTEVE to enable further growth and international expansion. ESTEVE announces a strategic partnership with Lubea, a German private investment firm which acquires a minority stake of 26% in ESTEVE.



New highly potent active pharmaceutical ingredient manufacturing workshop inaugurated in Banyeres (Spain).



Velyntra®, our new product comprising a co-crystal form of celecoxib and tramadol, is approved by the Spanish healthcare authorities.



2ND SEMESTER

The FDA lifts the import alert inherited from the Lliçà de Vall (Spain) site's previous owner.

Lotus project approval for the construction of a new API manufacturing workshop adding 150 m³ of reaction volume to the Celrà site.

CTC (co-crystal of celecoxib and tramadol) out-licensed to Eurofarma (South America, excl. Brazil).

The International Pharma Sales team signs an alliance for Central and Eastern Europe (CEE) in order to strengthen our presence in this region and offer advanced therapeutic solutions to patients there, thus improving their treatment outcomes.






How we do it (SUSTAINABILITY)

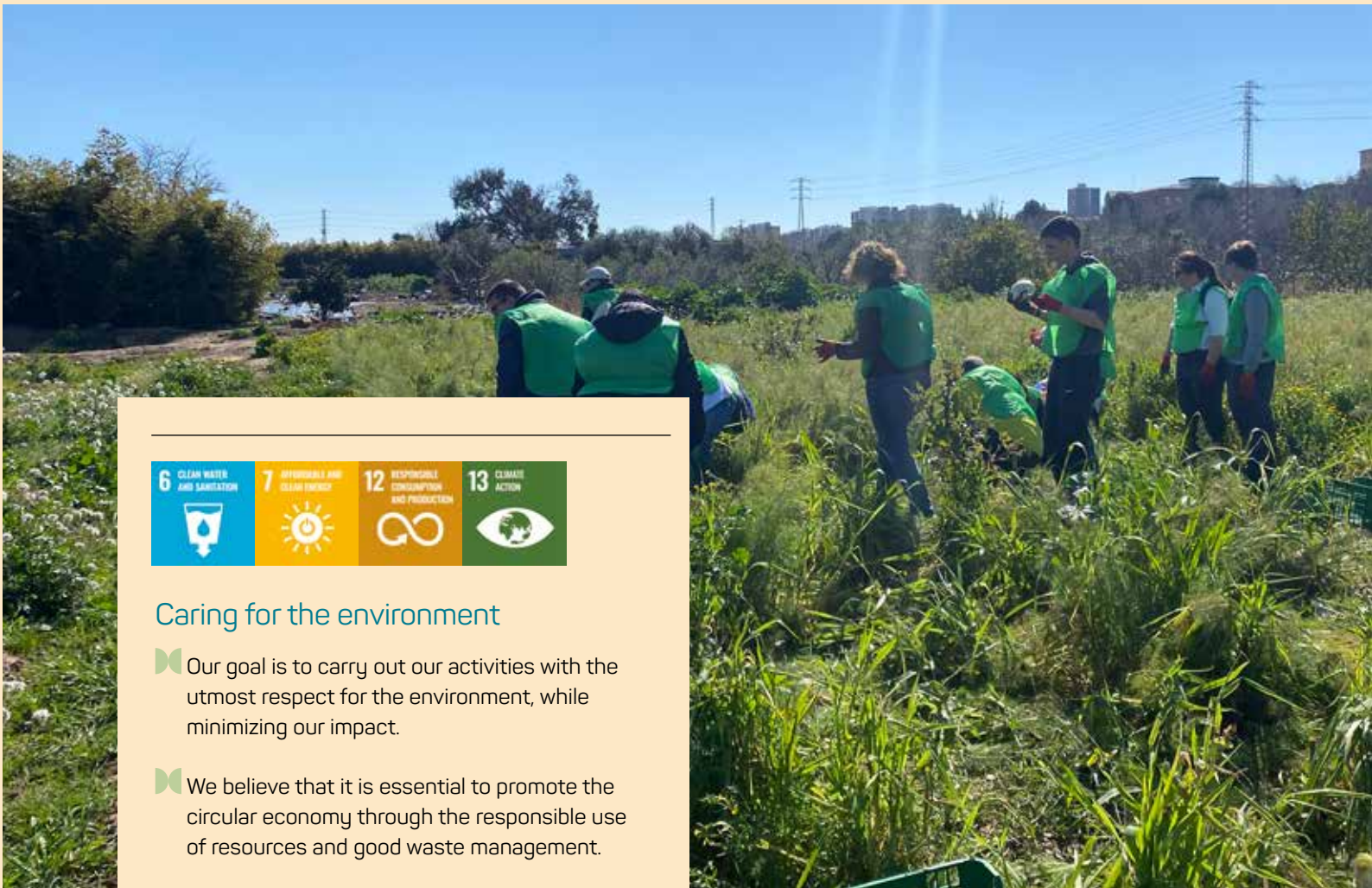
ESTEVE's long-term success is dependent on our ability to balance economic growth with environmental and social responsibility, good governance and transparency: doing good by doing well. For this reason, and to ensure that ESTEVE's culture guides our actions, we have a sustainability strategy aligned with the United Nations 2030 Agenda and ESG frameworks. This strategy is based on three pillars.

We want ESTEVE to be recognized as a responsible and sustainable company that is focused on care and that goes above and beyond regulatory, legal, and market standards.



Caring for people

-  In addition to ensuring the quality and safety of our products, we seek to provide support to improve patients' quality of life.
-  We promote a safe and healthy work environment for our employees, while encouraging healthy lifestyles, gender equality and individual growth.
-  We seek to generate a positive impact on communities through projects and/or collaboration agreements with third parties that ensure access to healthcare and coverage of basic needs.



Caring for the environment

- Our goal is to carry out our activities with the utmost respect for the environment, while minimizing our impact.
- We believe that it is essential to promote the circular economy through the responsible use of resources and good waste management.



Caring for our business

- We conduct our processes and work in an ethical manner, going above and beyond the required standards.
- We are committed to best practices in our corporate governance, to comprehensive risk management and to transparency in all our interactions.





Reaction volume: 333 m³

Scale-up, intermediate and API manufacturing

Location: Celrà, Spain



Reaction volume: 58 m³

Scale-up, intermediate and API manufacturing

Location: Banyeres del Penedès, Spain



Reaction volume: 160 m³

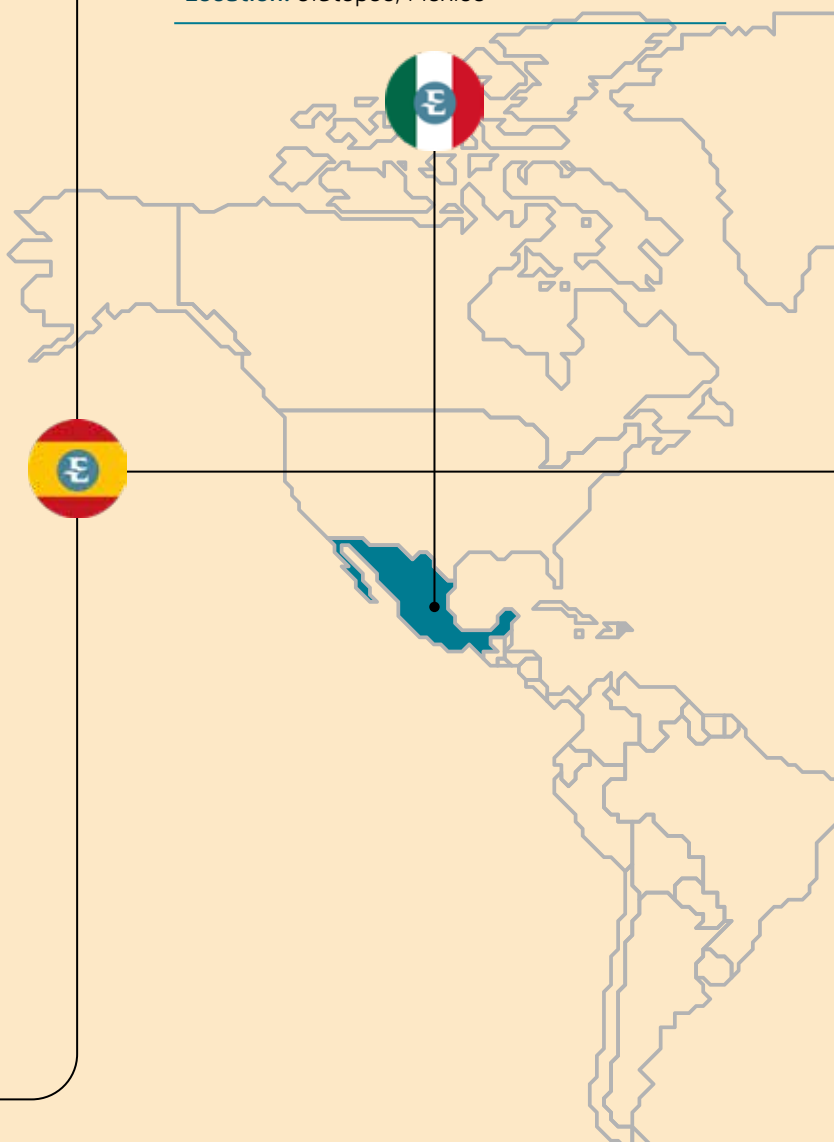
Location: Lliçà de Vall, Spain



Reaction volume: 140 m³

Development, scale-up, intermediate and API manufacturing

Location: Jiutepec, Mexico





Pharmaceutical manufacturing plant

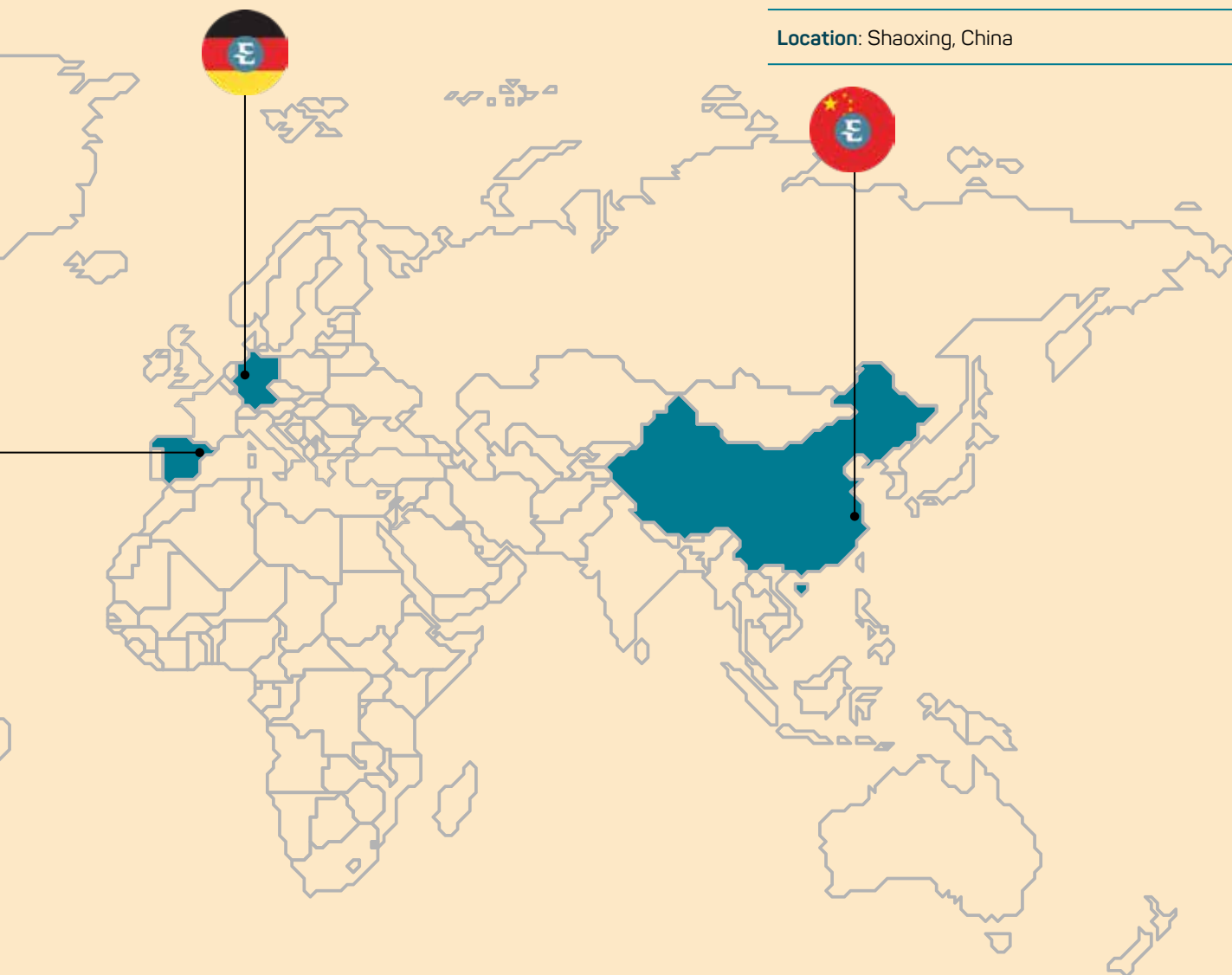
Location: Schiffweiler, Germany



Reaction volume: 344 m³

Intermediate and API manufacturing
Joint venture with Huadong Medicine Group

Location: Shaoxing, China

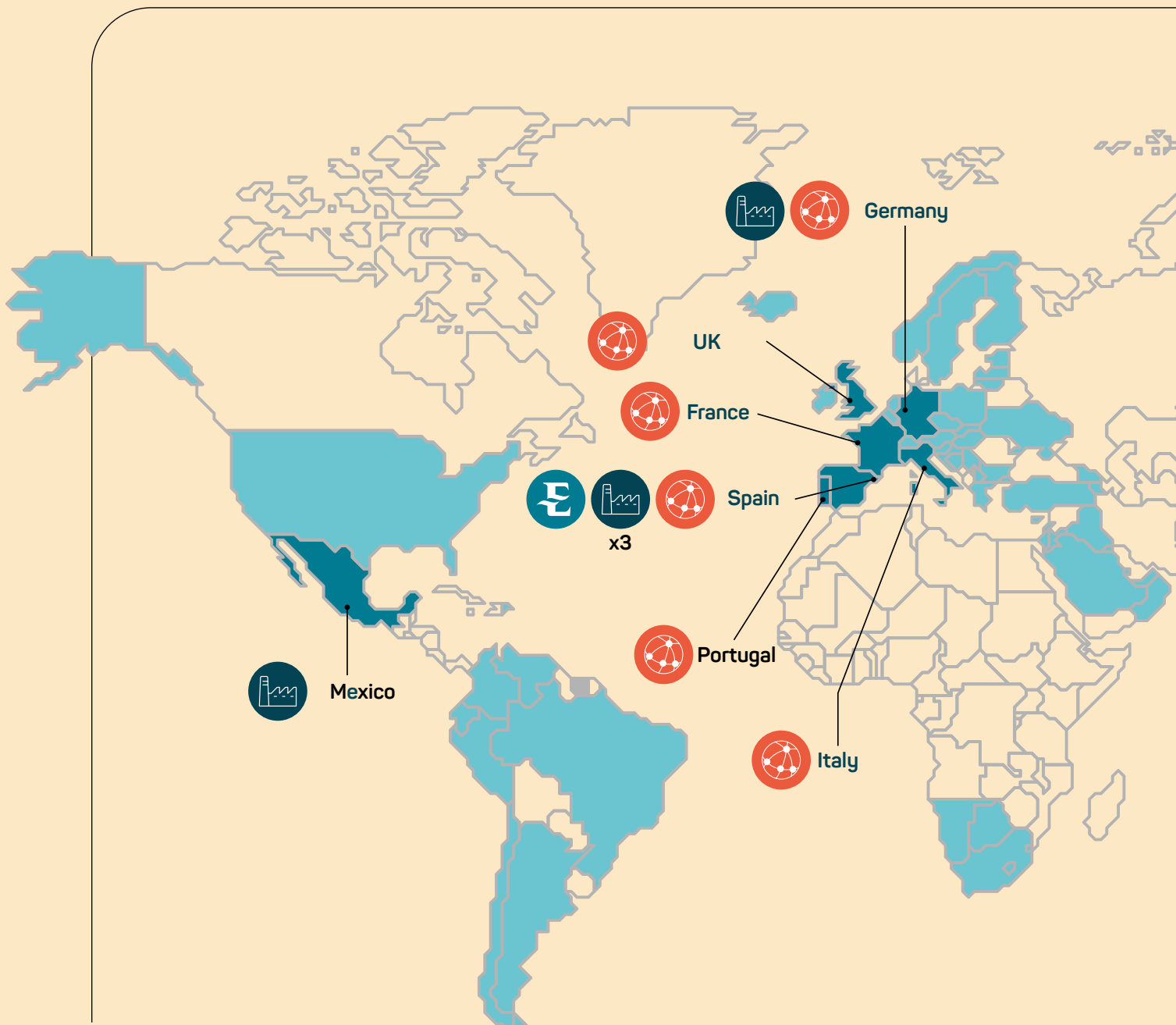


Global presence

+8 Million
patients impacted
by our activities



+50
Countries with direct
or indirect presence

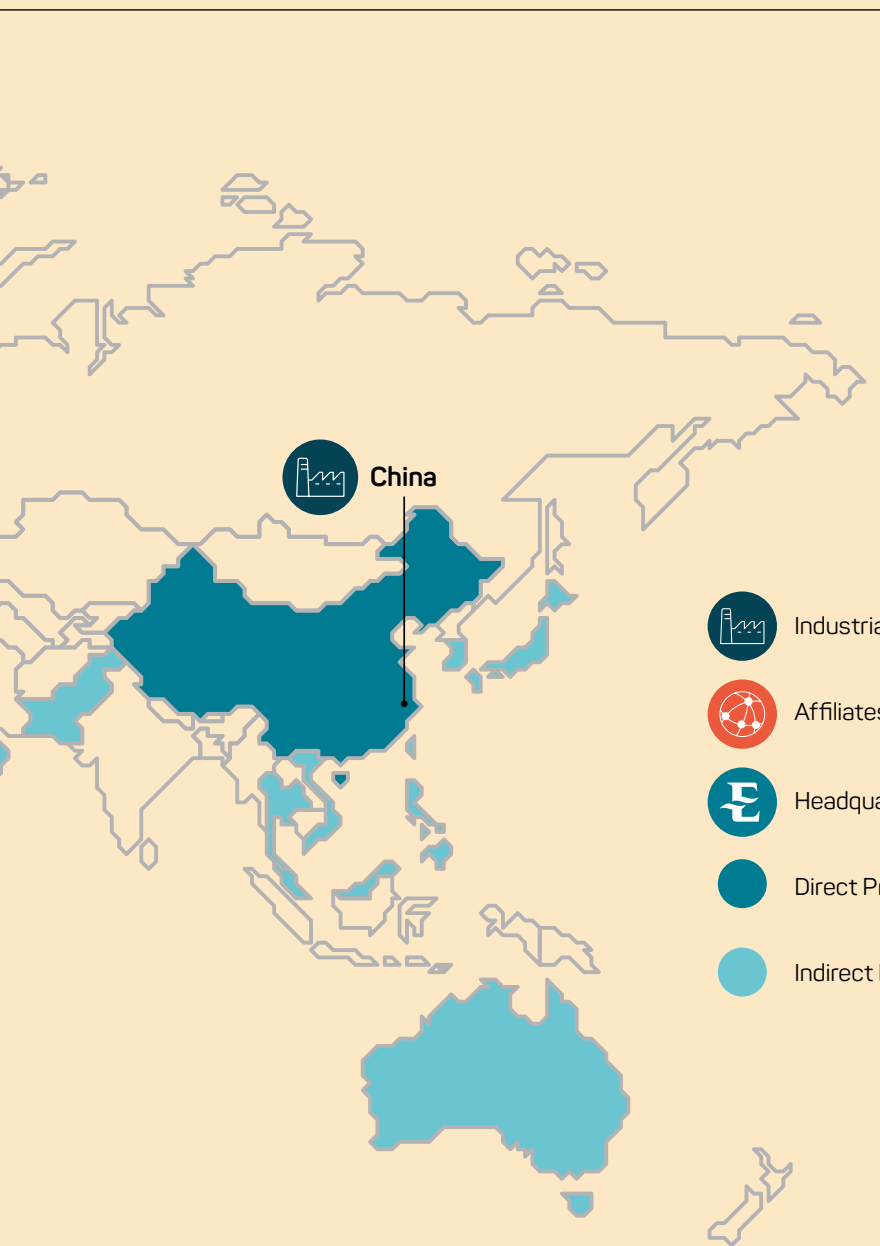


HQ
in Barcelona,
Spain



1,926
Employees

- » Spain 1,211
- » China 350
- » Mexico 171
- » Germany 148
- » France 15
- » Portugal 13
- » UK 12
- » Italy 4
- » USA 2





ESTEVE



esteveglobal



@ESTVEglobal



www.esteve.com

For further information, please contact:

Irene Simón
Head of Global External Communications & ESG
93 446 60 00
isimon@esteve.com